

Z5

Portable Color Doppler Diagnostic Ultrasound

OVERVIEW

An entry-level portable Color Doppler system, Z5 comes equipped with a rare combination high of high performance and low cost, providing you with the best of 2D image quality, affordability and mobility. Be it a fetus structure analysis or a female reproductive organ scan, Z5 can be used limitlessly across multiplex examaintaions

VERSALITY

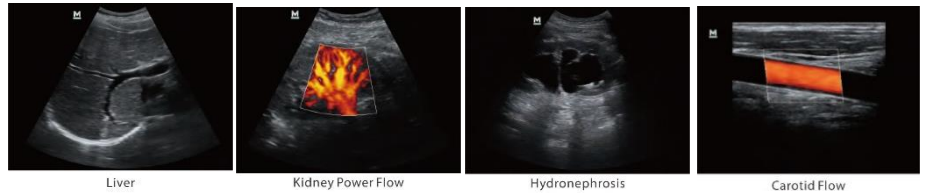
- > Scanning modes : B, Color, PW, Power, M, Freexros M
- > Image display modes :B, 2B, 4B, B/C, B/M, B/PW, Triplex PW
- > Applications : ABD/OB/GYN/CAR/SML/URO/ORTH/EM/NERVE
- > Transducer variety : Convex, Linear, Micro-convex, Endocavity
- > Extended scanning angle with ExFov Function
- > High Frequency linear probe for superficial scanning
- > Compatible with mindray's B/W ultrasound transducer series
- > Full application comment library and body mark

WORKFLOW

- > iTouch™ (Auto Image Optimization)
- > iStation™
- > iZoom™
- > iStorage™
- > iRoam™
- > iStorage™
- > DICOM

ERGONOMIC

- > Lightweight portable design
- > Special designed cart/ built-in handle
- > Uninterrupted scanning supported by rechargeable batter



Liver

Kidney Power Flow

Hydronephrosis

Carotid Flow

DP 10

Digital Ultrasound Diagnostic Imaging

OVERVIEW

Good image quality, convenient workflow and light enough to be easily carried, are some of the features of DP-10, Mindray's new generation of black & white ultrasound solution. With a new platform based on Intel's powerful processor, DP-10 would provide you with an enriching ultrasound experience.

Improve efficiency by optimizing the workflow

- > Fast boot-up within 20s
- > User-defined keys to deine personalized operations
- > One key images or cines saved to local disk or USB

Diagnostic confidence and wide clinical application

- > Full digital technology
- > IP (Image Procesing) for fast image optimization
- > 8-TGC assuring accurate image control
- > A broad range of transducers for obstetrics, gynecology, abdomen, urology, small parts, orthopedics and pediatrics applications

ERGONOMIC design with extreme mobility

- > 12.1" LED monitor with 30 degree tilt functionality
- > User friendly control panel with backlit silicon keyboard
- > Light and compact design for extreme portability



Fetus abdomen and ribs



Gallbladder stone



Thyroid



Carotid