



PT. MULTI MEDIKA RAYA

PRODUCT CATALOGUE



LKPP

Lembaga Kebijakan
Pengadaan Barang/Jasa Pemerintah

M.O.T SCHEMATIC DIAGRAM

provided by

PARSON and Dräger

Air Cooled Condensing Unit(ACCU)

Air Handling Unit (AHU)

- c/w:
- Pre-Cooling Coil
- Post-Cooling Coil
- Heating Coil (RH Conditioner)

FA (Fresh Air)

HEPA Filter

- Efficiency 99.97%
- Permenkes no 24-2016
- HEPA Filter Maximum Particle (0,5µm) = 35.200 Particle

SA (Supply Air)

RA (Return Air)

Surgical Lamp

- Shadowless, LED
- Temp. Color Adjustment
- Intensity & Focus Adjustment

Surgical Pendant

- Loading Capacity: 150 kg

Hermetic Automatic Sliding Door

- c/w Non-contact and Foot Sensory

Wall & Ceiling

- Sandwich Panel (PUR/PIR)
- High Density (42±2kg/m³)
- Fire Retardant
- High Thermal Conductivity

X-Ray Viewer

- LED Display
- c/w Dimmer

Surgical Control Panel

- Real & Elapsed Time
- Control & Visual of :
 - Temperature
 - Humidity
 - Lighting

Passbox

- Interlocking System
- UV Light Filter

Vinyl Flooring

- Anti Static
- Anti Bacterial
- Anti Slip
- Sound Proof
- Anti Stain

EA (Exhaust Air)

Exhaust Fan

Parameter	Nilai	Satuan
Indoor Air Quality		
- Tidak berbau (terutama bebas dari H2S dan Amoniak)	Floor Level	
- Tidak mengandung debu asbes	0,12 to 0,18 m/s	
- Indeks angka kuman untuk setiap ruang/unit	38 to 53	
- Konsentrasi Maksimum Mikro-organisme per m2 udara	0 – 5 CFU/cm² dan bebas pathogen dan gas gangrene	
Intensitas cahaya		
- Ruang Operasi Umum	300 – 500	Lux
- Meja Operasi	10.000 – 20.000	Lux
Suhu (°C)	19-24	°C
Kelembaban (%)	45-60	%

Parameter	Nilai	Satuan
Kebisingan Maksimum Waktu Pemaparan 8 Jam	45	dBA
Tekanan Udara Ruangan	Positif	
Arah Pergerakan Udara	Laminar	°C
Kecepatan Udara di outlet SAG	0,15 – 0,45	m/s
Pergantian Udara		
- Saat tidak ada aktivitas	Min. 4	Kali/jam
- Saat berlangsung operasi	Min. 20	Kali/jam

*) Sesuai dengan Keputusan Menteri Kesehatan Republik Indonesia Nomor: 1204/MENKES/SK/X/2004 Tentang Persyaratan Kesehatan Lingkungan Rumah Sakit.

INSTALASI PENGOLAHAN AIR LIMBAH



www.parahyanganteknikapersada.com

SISTEM BIO-OKSIDASI

INSTALASI PENGOLAHAN AIR LIMBAH (IPAL)

DEFENISI

Instalasi pengolahan air limbah (IPAL) (wastewater treatment plant, WWTP), adalah sebuah struktur yang dirancang untuk membuang limbah biologis dan kimiawi dari air sehingga memungkinkan air tersebut untuk digunakan pada aktivitas yang lain.

TUJUAN DAN MAKSUD

Sehubungan dengan pesatnya perkembangan pembangunan Rumah Sakit dan Industrial maka kami dari PT. Parahyangan Teknika Persada berupaya turut membantu dalam melaksanakan program yang telah di tentukan pemerintah untuk kelestarian lingkungan, maka terciptalah berupa sebuah SISTEM PENGOLAHAN AIR LIMBAH dengan teknologi yang telah teruji dan memenuhi syarat dari Kementerian Lingkungan Hidup.

Ada pun teknologi tersebut sangat ramah lingkungan dan low maintenance dalam pengoperasiannya. Kami menyebutnya dengan nama Bio – Maxi .



Tampak Belakang



Tampak Depan



LOW MAINTANANCE



RECYCLING

UJI LAB DAN REKOMENDASI TEKNOLOGI RAMAH LINGKUNGAN



KEMENTERIAN LINGKUNGAN HIDUP DAN KEHUTANAN
SEKRETARIAT JENDERAL
Gedung Manggala Wanabakti, Jalan Gatot Subroto
Jakarta 10270, Kotak Pos 6505
Telepon : 5730191, Faximile : 5738732

Nomor : 5.910/SEJEN/SK/STO.2/8/2018
Lampiran : 1 (satu) berkas
Hal : Registrasi Teknologi Ramah Lingkungan
Instalasi Pengolahan Air Limbah merk "BIO-MAXI"

Yth.
Direktur PT PARAHYANGAN TEKNIKA PERSADA
Jl. Terusan Cisolok Dalam No: 21
Bandung 40122, Jawa Barat

Menindaklanjuti surat Direktur PT Parahyangan Teknika Persada No : 0032/PTP/I-2018 tertanggal 12 Mei 2018, perihal Surat Permohonan Standardisasi Teknologi Ramah Lingkungan, bersama ini disampaikan bahwa:

- Merujuk:
 - Undang-undang Nomor 32 Tahun 2009 tentang Perlindungan dan Pengelolaan Lingkungan Hidup, Pasal 63 ayat 1 butir v bahwa Pemerintah mengkoordinasikan, mengembangkan, dan menyosialisasikan pemanfaatan teknologi ramah lingkungan hidup.
 - Peraturan Menteri Negara Lingkungan Hidup No:22 Tahun 2009 tentang Tata Laksana Registrasi Kompetensi Bidang Lingkungan.
 - Peraturan Menteri Lingkungan Hidup No: 2 Tahun 2014 tentang Pencantuman Logo Ekolabel.
 - Keputusan Sekretaris Jenderal Kementerian Lingkungan Hidup dan Kehutanan Nomor: SK.97/Setjen/SLK/STD.2/8/2017 tanggal 16 Agustus 2017 tentang Komite Teknis Verifikasi Teknologi Ramah Lingkungan.
 - SNI ISO 14034:2017 Manajemen lingkungan – Verifikasi teknologi lingkungan.
- Telah dilakukan Review dan Verifikasi terhadap teknologi Instalasi Pengolahan Air Limbah dengan system BIO-OKSIDASI merk "BIO-MAXI" disaksikan oleh Komite Teknis Verifikasi Teknologi Ramah Lingkungan, dengan informasi profil teknologi sebagai mana terlampir.
- Berdasarkan butir 1 dan 2 diatas, permohonan registrasi Teknologi Ramah Lingkungan telah disetujui dengan nomor registrasi : 060/TRL/Reg-1/KLHK dan masa berakhir nomor registrasi berlaku dalam jangka waktu 3 (tiga) tahun.

Demikian disampaikan, atas perhatian Saudara diucapkan terimakasih.

Sekretaris Jenderal,

Dr.Ir. Bambang Hendroyono, M.M
NIP. 19640930 198903 1 001

Tembusan Yth:

- Menteri Lingkungan Hidup dan Kehutanan (sebagai laporan);
- Direktur Jenderal Pengendalian Pencemaran dan Kerusakan Lingkungan, KLHK;
- Direktur Jenderal Pelayanan Kesehatan, Kementerian Kesehatan.



PT. UNILAB PERDANA
Laboratorium Lingkungan Hidup dan Kalibrasi
No. Reg : 0001/LP/LABLING-ILR/KLHK

Head Office: GEDUNG UNILAB B. Cihang Raya No. 10, Ciputat, Kabupaten Lemo, Jakarta 12230 Telp: (021) 725322 (Shoring) Fax: (021) 725323 e-mail: unilabperdana.com@gmail.com
Representative Office: Jl. Kuntari IV/2B, Kuntari, Tanggula Mejojo, Surabaya, Jawa Timur Telp: (031) 8415839 Fax: (031) 8415839

LAPORAN HASIL PENGUJIAN Nomor: LPUP02823

Nama pelanggan : RS. SURYA HUSADA
Alamat : Jl. Pulau Serangan No 7 Denpasar
No. identifikasi contoh : 02823
Uraian contoh : Air Limbah (Outlet STP)
Tanggal diterima di Lab : 02 Maret 2018
Tanggal pengujian : 02 Maret 2018 sampai 04 April 2018

Hasil Pengujian

NO	PARAMETER	SATUAN	BAKU MUTU	HASIL	METODE
1	pH (25 °C) **	-	5 - 9	7,26	SNI 06-6989-11-2004
2	Besi (Fe) **	mg/L	5	0,2	APHA Ed. 22nd 3120 B, 3030 E-2012
3	Mangan (Mn) **	mg/L	2	0,01	APHA Ed. 22nd 3120 B, 3030 E-2012
4	Berium (Ba) **	mg/L	2	0,02	APHA Ed. 22nd 3120 B, 3030 E-2012
5	Tembaga (Cu) **	mg/L	2	<0,009	APHA Ed. 22nd 3120 B, 3030 E-2012
6	Seng (Zn) **	mg/L	5	0,07	APHA Ed. 22nd 3120 B, 3030 E-2012
7	Krom Valensi enam (Cr ⁶⁺)	mg/L	0,1	<0,01	SNI 6989-71-2009
8	Krom Total (Cr) **	mg/L	0,5	0,03	APHA Ed. 22nd 3120 B, 3030 E-2012
9	Kadmium (Cd) **	mg/L	0,05	<0,002	APHA Ed. 22nd 3120 B, 3030 E-2012
10	Mercuri (Hg)	mg/L	0,002	<0,0005	APHA Ed. 22nd 3112 B - 2012
11	Timbal (Pb) **	mg/L	0,1	0,006	APHA Ed. 22nd 3120 B, 3030 E-2012
12	Strontium (Sr)	mg/L	2	<0,4	APHA Ed. 22nd 3120 B, 3030 E-2012
13	Arsen (As)	mg/L	0,1	<0,005	APHA Ed. 22nd 3114 B - 2012
14	Selenium (Se)	mg/L	0,05	<0,002	APHA Ed. 22nd 3114 B - 2012
15	Nikel (Ni) **	mg/L	0,2	<0,004	APHA Ed. 22nd 3120 B, 3030 E-2012
16	Kobalt (Co) **	mg/L	0,4	<0,004	APHA Ed. 22nd 3120 B, 3030 E-2012
17	Sianida (CN) **	mg/L	0,05	<0,005	APHA Ed. 22nd 4500-CN-E-2012
18	Sulfida (sebagai S) **	mg/L	0,05	<0,002	APHA Ed. 22nd 4500-S-D-2012
19	Fluorida (F ⁻) **	mg/L	2	<0,01	APHA Ed. 22nd 4500-F-D-2012
20	Klorin Bebas (Cl ₂) **	mg/L	-	<0,01	UP IK 21.01.34 (Spektrofotometri)
21	Nitrat (NO ₃ -N) **	mg/L	20	1	APHA Ed. 22nd 4500-NO ₃ -E-2012
22	Nitrit (NO ₂ -N) **	mg/L	1	0,01	SNI 06-6989-9-2004
23	Senyawa aktif biru metilen (MBAS) **	mg/L	10	5	SNI 06-6989-23-2005
24	Suhu (lab) **	°C	-	21	SNI 06-6989-23-2005
25	Zat Padat Terlarut (TDS) **	mg/L	2000	204	UP IK 21.01.06 (Konduktometri)
26	Zat Padat Tersuspensi (TSS) **	mg/L	200	8	UP IK 21.01.07 (Spektrofotometri)
27	COD **	mg/L	80	12	SNI 6989-2-2009
28	BOD ₅ **	mg/L	50	3	SNI 6989-72-2009
29	Minyak & Lemak **	mg/L	10	<1,8	SNI 6989-10-2011
30	Amonia Nitrogen **	mg/L	10	<0,01	SNI 06-6989-30-2005
31	Amonia Bebas (NH ₃ -N) **	mg/L	1	<0,01	SNI 06-6989-30-2005

Keterangan : *) = 1) PERGUB Ball No. 16 Tahun 2016 Lampiran VI Tabel A
2) PERGUB Ball No. 16 Tahun 2016 Lampiran VI Tabel B
**) = Parameter terakreditasi oleh KAN No. LP-195-IDN
* = Amonia bebas sudah dikoreksi terhadap pH dan Suhu
< = Lebih kecil



PT. UNILAB PERDANA

Manajer Sistem Mutu & K3LL

Halaman 1 dari 1

*Hasil yang ditampilkan hanya berhubungan dengan contoh yang diuji dan laporan hasil pengujian tidak boleh digandakan kecuali seluruhnya tanpa persetujuan tertulis dari laboratorium
* Pengujian terhadap laporan hasil pengujian tidak dilayani setelah 30 hari dari waktu penerbitan laporan hasil pengujian

IDENTITAS SAMPLE : Air Limbah RS. Annisa Medical Center " Inlet & Outlet "

Parameter	Satuan	Hasil		Baku Mutu	Metode *)
		Inlet	Out		
Fisika :					
Suhu at lab	°C	27,0	27,0	38	2550 B
Zat Padatan Terlarut **	mg/L	704	420	2000	2540 C
Zat Padatan Tersuspensi **	mg/L	56	8	30	2540 D
Kimia :					
pH at lab **	-	7,26	7,39	6 – 9	4500-H ⁺ -B
BOD ₅ days 20°C	mg/L	10,3	2,95	50	5210 B
COD by K ₂ Cr ₂ O ₇ **	mg/L	25,8	7,37	80	5220 B
Minyak & Lemak **	mg/L	< 2	< 2	10	5520 B
Surfactans Anionic MBAS **	mg/L	0,60	< 0,05	10	5540 C
Ammonium as N **	mg/L	5,89	1,84	10	4500-NH ₃ -F
Total Coliform ***	MPN/100 mL	94000	110	5000	9221 B

*) Standard methods 22nd edition 2012,APHA-AWWA-WEF

**) Parameter Akreditasi KAN No. LP-781-IDN



DigiRAD-FPC (Dual type)

Digital Image Acquisition & Processing Console

- Flat Panel Detector has active area of 43x43cm suitable for radiographic applications.
- High-throughput performance and easy workflow, up to threefold efficiency
- RIS Modality Worklist interface for patient's examination and grouped procedure configuration
- Configurable procedure step sequencing by predefined APRs

DigiRAD-FPC (Multi type)

Wide-range motion radius support applicable to all types of Radiography

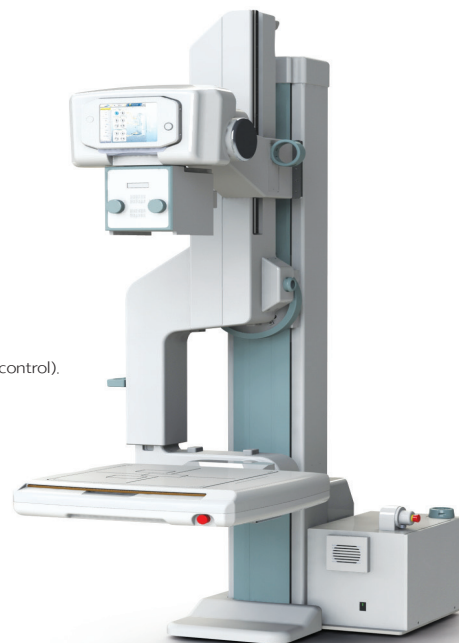
- Multipurpose remote-controlled radiography of patient's position by tube orthotic fixed on the ceiling.
- Vertical and rotational movements by remote control.
- In-depth and minute radiography.
- Chest radiography and general radiography on the table through its rotation function.
- Shortest-time of patient positioning and continuous radiography.
- Radiography at various positions and at subtle angles in case of an emergency patient.



DigiRAD-FPC (U-arm type)

Specialized in all kind of medical examination

- Achieving low noise by noise canceling image processing circuit
- Low lag image by strengthen refresh function, suitable for during radiographic exposure
- Improvement in radiography speed by stability and optimum positioning on the universal stand.
- Increased maneuverability through the integration of detector and tube (One-touch radiography control).
- Fast acquisition of images via RAPS (Remote Auto Position System) support.
- Soft and wide-range motion, and compact structural design.
- Multipurpose of chest and general radiography.
- Detector rotation and standing motion.



DigiRAD-FPC (Chest type)

Specialized in chest radiography

- Fast and accurate radiography from head to ankle through the wide driving range of detector and tube.
- Highly practicable with almost no spatial constraints on the small and compact design.
- Equipment of high economical efficiency that can be fit with medical examination centers or small and midsize hospitals.
- Suitable for mobile vehicles for medical checkup with its vertical stand type.



DigiRAD-FP (Floor type)

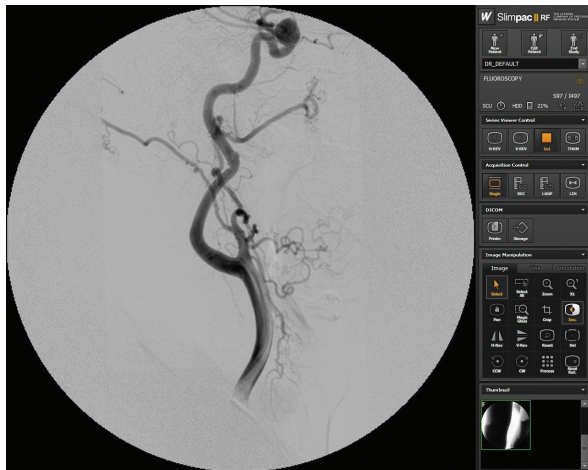
Floor Mounted system is designed to offer all types of exams to clinics which have high volumes of patient.

Its compact and clever design delivers high-performance as well as cost-effective operation. Sitec radiographic system "DigiRAD-FP" delivers the ease-of-use, image quality and throughput. The system is designed to fully meet the demands on quality and versatility at an affordable price. The compact, space-saving high-frequency generator and tube support provide greater working space and flexible layout.



Slimpac II RF

The Slimpac II RF is a high-resolution digital imaging system designed for use with interventional and remote R/F tables from any vendor. The system's high-resolution 1,024×1,024 pixel digital camera and optics can be interfaced to an image intensifier from any leading manufacturer. Likewise, the Slimpac II RF can be connected to virtually any generator and to any DICOM 3.0 compliant HIS/RIS and PACS system.



Key Features

- Pentium PCI-based workstation / Window XP operating system
- Advanced CCD-based camera, 1,024×1,024 pixel resolution / 12-bit digitization depth
- Computerized camera iris control
- Comprehensive fluoroscopy acquisition package
- On-line road-mapping
- Real-time DSA acquisition / Angio (Option)
- Fluoroscopy loop acquisition
- Radiography acquisition rate of up to 7.5 frames per second (up to 30 fps with the Primax Turbo option) / Angio (Option)
- Extensive angiography package, including off-line image subtraction / Angio (Option)
- Dicom 3.0 Network Connectivity, including Store, Print, Worklist Management, Modality Performed Procedure Step (MPPS) and Storage Commitment
- Compliant with the IHE's Scheduled Workflow (SWF) profile

Digital Mobile X-ray system

MobiRAD 400

► Efficiency

- Compact size and light weight
- Auto SID by ultrasound

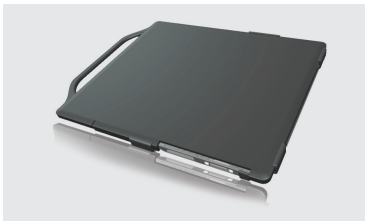
► Economical

- Hybrid battery with ultra capacitor

► Safety

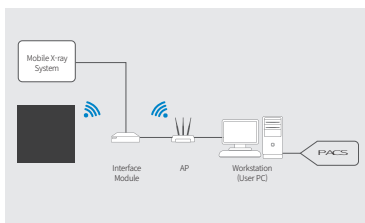
- Anti-collision sensors

• Wireless Detector



※ Wireless power charging system with carrying case

• Wireless Interface



Digital Mobile X-ray system

MobiRAD 50

Specifications

HF Inverter	100kHz
KV range	40KV~110KV(1KV STEP)
mAs range	0.32mAs~200mAs
Focal spot	1.8mm
Maximum anode cooling rate	265W
Option	Battery or Capacitor charging



| MobiRAD50 (Vet)



FALCO 202

The Life Braeth



Our ventilator model Falco 202 is equipped with a compact valve group with an integrated Siare Micro Flow reusable sensor.

Il Falco 202 è dotato di un gruppo valvole paziente compatto con sensore di flusso SIARE Micro Flow integrato riutilizzabile.

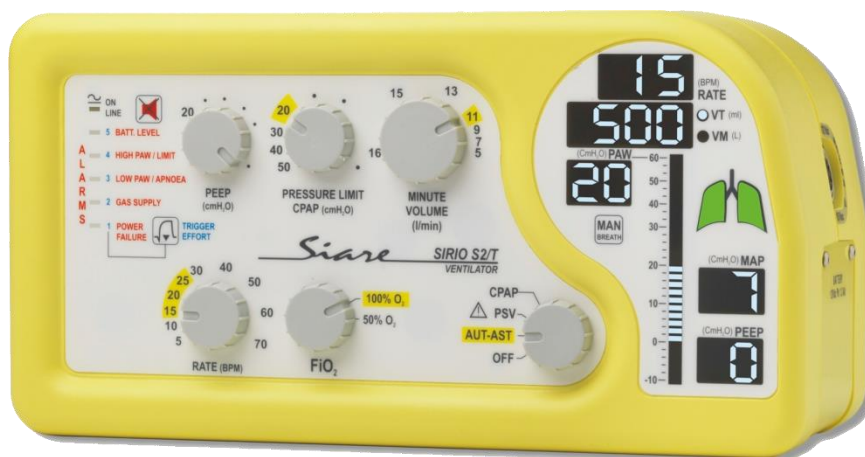


In order to simplify its maintenance, the equipment has been equipped with a unique filter easily removable.

Per facilitare la gestione manutentiva, il Falco 202 è stato dotato di un unico filtro facilmente rimovibile.

SIRIO S2/T

Emergency Portable Ventilator



Easy ventilation,
advanced technology

At the 4th edition of a project started on 1979, the new Sirio S2/T combines excellent flexibility, friendly user and advanced technology.

The newest of Siare has been conceived expressly for patient's breathing assistance in emergency health care during transport.

Compact, light and equipped with long lasting internal battery granting the maximum flexibility of use.

Versatility:

Sirio S2/T offers a wide range of therapeutic options, it grants a controlled volume ventilation limited by pressure in invasive and non-invasive modality that meets the breathing requirements of adult, paediatric and neonatal patients (weight > 3 kg).

Simplicity:

The friendly user interface, cleverly designed to facilitate emergency health operators, makes of this ventilator the ideal choice for application on ambulance, helicopter and airplanes.

Performances:

Sirio S2/T grants excellent performances taking advantage of the technological benefits offered by Siare.

It is equipped with several ventilation modalities: CPAP - PSV+ Apnoea Back-up - AUT+AST - MANUAL - PEEP.

FiO2 adjustable at 50% or 100% O2, Built-in spirometry, pressure trigger.

Long lasting internal battery and a serie of optional accessories designed for an easy mobility of the device.

MRI Compatible Version

The new Sirio S2/T is available also in the non-magnetic version (code 09636/RMN) for application in Magnetic Resonance environments from 1,5 and from 3.0 Tesla. It is the ideal choice for intra-hospital transportation to transfer the patients from resuscitation to magnetic resonance in continuous ventilation without disconnection, ensuring greater comfort and safety to the patient.



Version for transport with professional steel tubular support (for ventilator and 2 lt cylinder housing), with possibility to attach a rapid disconnection plate for installation on ambulance wall.

Aria 104

10" Portable intensive care ventilator

Oxygen driven ventilator with built-in turbine
for adults, children and newborn

- Touch Screen -



Code: 980104/A

Rev.1- 27/02/2020

GENERAL DATA

Aria 104 electronic lung ventilator is equipped with turbine and with a TFT 10,4" colour monitor touch screen displaying the curves of pressure, flow, volume, the loops of breathing parameters, the trends and the ventilation parameters. Aria 104 lung ventilator is suitable for ventilation of adult, paediatric and neonatal patients. Aria 104 lung ventilator is equipped with a flow generation system by turbine with separate cooling system granting higher quality and safety standards in patient ventilation.

Aria 104 is equipped with a flow and pressure trigger, it provides the most advanced volume-controlled ventilation modalities VC/VAC, VC/VAC-BABY, pressure-controlled ventilation modalities APCV (BILEVEL ST), APCV-TV, SIMV by Volume and by Pressure, Pressure supported modalities PSV (BILEVEL S), PSV-TV, CPAP, APRV, SIGH, Non-Invasive Ventilation (NIV APCV - NIV PSV), Drug Nebulizer and Manual Ventilation (MAN).

Aria 104 is supplied with back up long lasting batteries and its software can be updated for new modes and last generation ventilation strategies.

NORMS



The lung ventilator is conform to the essential requirements and it is realized according to the references of the Annex II of 93/42/EEC Medical Devices Directive.

Class and type according to IEC 601-1 Class I Type B

Class according to 93/42 EEC Directive Class IIb

Electromagnetic compatibility (EMC) EN 60601-1-2: 2015 and following

Norms DIR. 93/42/CEE (2007); EN 60601-1 :2006/A1 :2011/A1 :2013; EN 60601-1-2 :2015; IEC 601-1-6:2013; IEC 601-1-8:2012; EN 62304:2006/AC:2008; ISO 10993-1:2009; IEC 62353:2014; EN 60601-2-12:2007; ISO 80601-2-12:2011; ISO 15223-1:2016; DIR. 2011/65/CE; D.Lgs 49/2014; ISO 14971:2012; EN ISO 4135:2001

ARIA 150

Intensive care ventilator

Oxygen driven ventilator with built-in turbine for adults, children and newborn - Touch Screen

Code: 960502/A

Rev.1 - 27/02/2020



GENERAL DATA

Aria 150 electronic lung ventilator is equipped with turbine and with a TFT 15" colour monitor touch screen displaying the curves of pressure, flow, volume, the loops of breathing parameters, the trends and the ventilation parameters.

Aria 150 lung ventilator is suitable for ventilation of adult, paediatric and neonatal patients. Aria 150 lung ventilator is equipped with a flow generation system by turbine with separate cooling system granting higher quality and safety standards in patient ventilation.

Aria 150 is equipped with a flow and pressure trigger, it provides the most advanced volume controlled ventilation modalities VC/VAC, VC/VAC-BABY, pressure controlled ventilation modalities APCV (BILEVEL ST), APCV-TV, SIMV by Volume and by Pressure, Pressure supported modalities PSV (BILEVEL S), PSV-TV, CPAP, APRV, SIGH, Non Invasive Ventilation (NIV APCV - NIV PSV), Drug Nebulizer and Manual Ventilation (MAN).

Aria 150 is supplied with back up long lasting batteries and its software can be updated for new modes and last generation ventilation strategies.

NORMS



The lung ventilator complies with the essential requirements and it is realized according to the references of the Annex II of 93/42/EEC Medical Devices Directive.

Class and type according to IEC 601-1

Class I Type B

Class according to 93/42 EEC Directive

Class IIb

Electromagnetic compatibility (EMC)

Conform to the requirements of the EN 60601-1-2:2015 and following

Norms

EN 60601-1 :2006/A1 :2011/A1 :2013; EN 60601-1-2 :2015; IEC 60601-1-6:2013; IEC 60601-1-8:2012; EN 62304:2006/AC:2008; ISO 10993-1:2009; IEC 62353:2014; EN 60601-2-12:2007; ISO 80601-2-12:2011; ISO 15223-1:2016; DIR. 2011/65/CE; D.Lgs 49/2014; ISO 14971:2012; EN ISO 4135:2001

Mobile Suction SA 03HT - 04HT



SPECIFICATION

COMPRESSOR	OILLESS PISTON PUMP
VOLTAGE	230 VAC \pm %10 , 50 Hz
MAX. FREE AIR FLOW	60 lt / min \pm %10
MAX. VACUUM	-700 mmHg \pm %5
VACUUM SETTING	YES
COLLECTION JAR	2 - 3 - 5 lt
PROBE CONTAINER	YES
MOBILE STAND	YES
STAND BASKET	YES
DEVICE BODY	PLASTIC
STAND BODY	ANTI-STATIC PAINTED METAL
VACUUM ENTRANCE	DOUBLE
LEFT-RIGHT JAR CHANGE	WITH ELECTRONIC BUTTON WITH SENSOR AUTOMATIC
FLOAT SYSTEM	YES
HYDROPHIBIC FILTER	YES
FOOT PEDAL	OPTIONAL
STANDARD	ISO 10079 - 1

Portable Suction SA 02PT-03PT



SPECIFICATION

MOTOR TYPE	OILLESS PISTON PUMP
VOLTAGE	230 VAC \pm %10 , 50 Hz
MAX. VACUUM (ADJUSTABLE)	- 640 mmHg \pm %10
MAX. FREE AIR FLOW RATE	15 / 30 LPM \pm %10
NOISE LEVEL	< 50 dB
CLASSIFICATION	ISO 10079-1

Emergency Portable Suction SA 02PB



SPECIFICATION

PRODUCT MODEL	SA02PB
FLOW RATE	30 LPM \pm %10
NOISE	<60 dB
WEIGHT	4,5 kg
BATTERY	45 min
MAX VACUUM	- 650 \pm %5 mmHg
MOTOR TYPE	OILLESS PISTON PUMP
DIMENSION	380 x 135 x 290 mm
BATTERY TYPE	NiMH
VOLTAGE	12 VDC

Emergency Portable Suction SA 04PB



SPECIFICATION

PRODUCT MODEL	SA04PB
FLOW RATE	30 LPM \pm %10
NOISE	<60 dB
WEIGHT	4,5 kg
BATTERY	45 min
MAX VACUUM	- 650 \pm %5 mmHg
MOTOR TYPE	OILLESS PISTON PUMP
DIMENSION	380 x 135 x 290 mm
BATTERY TYPE	NiMH
VOLTAGE	12 VDC

Oxygen Concentrator OC5 - OC 5Plus



SPECIFICATION

OXYGEN FLOW RANGE	1- 5l / min
OXYGEN CONCENTRATION	%92 \pm 3
MAXIMUM OUTLET PRESSURE	8 PSI \pm 1
VOLTAGE	230 VAC \pm %10, 50 Hz
CURRENT	1,40 AMP \pm %10
OPERATING TEMPERATURE RANGE	10°C - 40°C
OPERATING HUMIDITY RANGE	10 - 90 % RH
WEIGHT	14 kg
NOISE LEVEL	< 45 dB

Ultrasonic Nebulizer UN 600A



SPECIFICATION

VOLTAGE	230 VAC±%10, 50 Hz
POWER	40 W-70 W (with heater)
CRYSTAL OPERATING FREQUENCY	1,68 MHz ±%5
PARTICLE SIZE	0,5 - 6 µm
AVERAGE NEBULIZATION RATE	0-5 ml/min ±%10
AEROSOL TANK	650 ml
WEIGHT	< 4 kg
HEATER	MAX.38°C (with heater)
OPERATING TEMPERATURE RANGE	10°C - 40°C
STORAGE TEMPERATURE RANGE	10°C - 40°C
OPERATION TYPE	CONTINUOUS

ACCESSORIES



Ultrasonic Nebulizer UN 300A



SPECIFICATION

VOLTAGE	230 VAC±%10, 50 Hz
POWER	40 W
CRYSTAL OPERATING FREQUENCY	1,68 MHz ±%5
PARTICLE SIZE	0,5 - 6 µm
AVERAGE NEBULIZATION RATE	0-5 ml/min ±%10
AEROSOL TANK	300 ml (Maximum)
WEIGHT	< 3 kg
OPERATING TEMPERATURE RANGE	10°C - 40°C
STORAGE TEMPERATURE RANGE	10°C - 40°C

ACCESSORIES



Compressor Nebulizer CN 04



SPECIFICATION

VOLTAGE	230 VAC ±%10, 50 Hz
POWER	100 W
MEDICATION CAPACITY	5 ml
PARTICLE SIZE	0,5 - 10 µm
MMAD	4 µm
NOISE LEVEL	BELOW 60 dBA
MAXIMUM MEDICATION CAPACITY	13 ml (cc)
AVERAGE NEBULIZATION RATE	min 0,2 ml / dk
COMPRESSOR PRESSURE RANGE	30 - 36 PSI (max.)
OPERATION PRESSURE RANGE	8 - 16 PSI
LITER FLOW RANGE	6 - 8 lpm
OPERATING TEMPERATURE RANGE	10°C - 40°C
OPERATING HUMIDITY RANGE	10 - 90 % RH
WEIGHT	< 2 kg

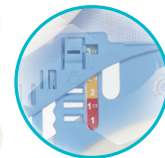
ACCESSORIES



Neck Collar Adult



Neck Collar Pediatric



S30

Dental Unit



Simulating Control Technology, Enhanced Functionality

- ✦ Touch control panel and photoelectric sensor holder design.
- ✦ 5 preset memory positions for each dentist; only one button to control chair, operating light, cup filling and bowl rinsing.
- ✦ An inter-locking system for dynamic instrument preventing injury and improving working efficiency of dentist.
- ✦ Photoelectric sensor system controlling on/off of all instrument.
- ✦ Brush/brushless micromotor to choose, speed adjustment by foot pedal.
- ✦ Chair position adjustment and dynamic instruments control by multifunctional foot pedal.

Ergonomic Design

- ✦ The synchronized design between the seat and backrest of patient chair guarantees excellent movement compensation.
- ✦ The innovative inner-track design has overcome the “back rubbing” problem during the chair movement.
- ✦ The original Italian leather makes a perfect combination of fashion and comfort.
- ✦ Whip arm version, haging version, cart version dentist element optional.
- ✦ Photoelectric sensor system controlling on/off of all instrument.
- ✦ An inter-locking system for dynamic instruments preventing injury and improving working efficiency of dentist.
- ✦ A safety device stops the patient chair or backrest moving down in the presence of obstacles and the chair will move up a little bit.
- ✦ When the spittoon is swiveled in, the chair will not be able to move to avoid unexpected harm.

S60

Dental Unit



Simulating Control Technology, Enhanced Functionality

- ✦ Touch control panel and photoelectric sensor holder design.
- ✦ 5 preset memory positions for each dentist; only one button to control chair, operating light, cup filling and bowl rinsing.
- ✦ An inter-locking system for dynamic instrument preventing injury and improving working efficiency of dentist.
- ✦ Photoelectric sensor system controlling on/off of all instrument.
- ✦ Brush/brushless micromotor to choose, speed adjustment by foot pedal.
- ✦ Chair position adjustment and dynamic instruments control by multifunctional foot pedal.

Ergonomic Design

- ✦ The synchronized design between the seat and backrest of patient chair guarantees excellent movement compensation.
- ✦ The innovative inner-track design has overcome the "back rubbing" problem during the chair movement.
- ✦ The original Italian leather makes a perfect combination of fashion and comfort.
- ✦ Whip arm version, hanging version, cart version dentist element optional.
- ✦ Photoelectric sensor system controlling on/off of all instrument.
- ✦ An inter-locking system for dynamic instruments preventing injury and improving working efficiency of dentist.
- ✦ 3-level height adjustment of assistant element.
- ✦ A safety device stops the patient chair or backrest moving down in the presence of obstacles and the chair will move up a little bit.
- ✦ When the spittoon is swiveled in, the chair will not be able to move to avoid unexpected harm.

S90

Dental Unit



Simulating Control Technology, Enhanced Functionality

- ✦ Touch control panel and photoelectric sensor holder design.
- ✦ 5 preset memory positions for each dentist; only one button to control chair, operating light, cup filling and bowl rinsing.
- ✦ An inter-locking system for dynamic instrument preventing injury and improving working efficiency of dentist.
- ✦ Photoelectric sensor system controlling on/off of all instrument.
- ✦ Brush/brushless micromotor to choose, speed adjustment by foot pedal.
- ✦ Chair position adjustment and dynamic instruments control by multifunctional foot pedal.

Ergonomic Design

- ✦ The synchronized design between the seat and backrest of patient chair guarantees excellent movement compensation.
- ✦ The innovative inner-track design has overcome the “back rubbing” problem during the chair movement.
- ✦ The original Italian leather makes a perfect combination of fashion and comfort.
- ✦ Whip arm version, hanging version, cart version dentist element optional.
- ✦ Photoelectric sensor system controlling on/off of all instrument.
- ✦ An inter-locking system for dynamic instruments preventing injury and improving working efficiency of dentist.
- ✦ 3-level height adjustment of assistant element.
- ✦ A self-checking system is activated when Siger S90 is powered on to ensure equipment reliability
- ✦ A safety device stops the patient chair or backrest moving down in the presence of obstacles and the chair will move up a little bit.
- ✦ When the spittoon is swiveled in, the chair will not be able to move to avoid unexpected harm.

U200

Dental Unit



Simulating Control Technology, Enhanced Functionality

- ✦ Touch control panel and photoelectric sensor holder design.
- ✦ 5 preset memory positions for each dentist; only one button to control chair, operating light, cup filling and bowl rinsing.
- ✦ An inter-locking system for dynamic instrument preventing injury and improving working efficiency of dentist.
- ✦ Photoelectric sensor system controlling on/off of all instrument.
- ✦ Brush/brushless micromotor to choose, speed adjustment by foot pedal.
- ✦ Chair position adjustment and dynamic instruments control by multifunctional foot pedal.

Ergonomic Design

- ✦ The synchronized design between the seat and backrest of patient chair guarantees excellent movement compensation.
- ✦ Unique anatomic backrest and dual-jointed headrest can fit with patients of different sizes.
- ✦ Whip arm version, haging version, cart version dentist element optional.
- ✦ Hydrogroup with 90° rotation provides more space for the dentist.
- ✦ Photoelectric sensor system controlling on/off of all instrument.
- ✦ An inter-locking system for dynamic instruments preventing injury and improving working efficiency of dentist.
- ✦ A safety device stops the patient chair or backrest moving down in the presence of obstacles and the chair will move up a little bit.

Unique Hygienic Design

- ✦ Removable silicon pad for cleaning and disinfection.
- ✦ Anti-suction system of dynamic instrument to avoid iatrogenic infection.
- ✦ Delayed HV suction mechanism.
- ✦ Detachable suction system for cleaning.
- ✦ Easy switch between distilled water and tap water system.
- ✦ Detachable ceramic spittoon and water let-out for cleaning.

U100

Dental Unit



Simulating Control Technology, Enhanced Functionality

- ✦ 5 preset memory positions for each dentist; only one button to control chair, operating light, cup filing and bowl rinsing.
- ✦ Brush/brushless micromotor to choose, speed adjustment by foot pedal.
- ✦ Chair position adjustment and dynamic instruments control by multifunctional foot pedal.

Ergonomic Design

- ✦ Unique anatomic backrest and dual-jointed headrest can fit with patients of different sizes.
- ✦ Whip arm version, haging version, cart version dentist element optional.
- ✦ Hydrogroup with 90° rotation provides more space for the dentist.
- ✦ A safety device stops the patient chair or backrest moving down in the presence of obstacles and the chair will move up a little bit.

Unique Hygienic Design

- ✦ Removable silicon pad for cleaning and disinfection.
- ✦ Detachable suction system for cleaning.
- ✦ Easy switch between distilled water and tap water system.
- ✦ Detachable ceramic spittoon and water let-out for cleaning.

Sd-175

Electro-pneumatic
treatment centre.
(Hanging hose
delivery system)



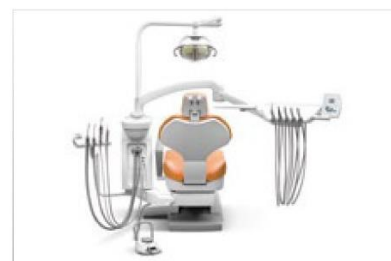
A "PREMIUM" PRODUCT OF EXCEPTIONAL QUALITY.

The Ancar 1 Series is the obvious answer for the dental professional looking for easy access to all of its excellent and intelligent features.

Its adaptability lends itself to all types of dental consultancy and clinics. It is well designed and well constructed and is always ready for easy modification, offering numerous accessories to suit your needs and preferences. The 1 Series promises dentists comfort, performance and reliability; and to their patients that important sense of well being



Hanging hose version with two trays for small hand instruments including pneumatic brake for better stability.



"Self Water System".
Independent water supply
system for instruments on the
equipment.



H1 disinfection system for
suction hoses. H1 includes the
automatic suction hose selection
system.



WEK water decontamination
system for instrument hoses.



Td-170

Td-220

Td-300



EDI lamp with halogen light
bulb at 25,000 Lux. With ON/
OFF switch or optical sensor
(optional).



Levers are easy to remove and
sterilize in an autoclave.

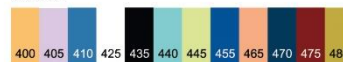


ALYA lamp with LED technology
at 50,000 Lux.

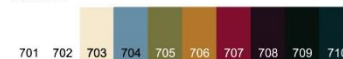


POLARIS lamp with LED
technology with adjustable light
intensity from 15,000 to 30,000
Lux.

"Standard"



"Soft Drive"



ALUMINIUM CORE: Made in light,
anticorrosive aluminium alloy.



Cutting-edge and very sturdy. Excellence
in construction details. Technical and
mechanical solutions.



Excellence in construction details.



Suction filter that is easy to access and
clean.



Removable and autoclavable instrument
support.



Rotary instrument oil recycler.



Assistant support with two standard suction
hoses that can be removed and thermo
disinfected. Possibility of installing an
optional 3P, syringe, intracanal camera and
polymersing lamp.



High-capacity porcelain cuspidor.



Water unit with 75° turn. Chair covers
made from highly resistant Baydure. Easy
access to the inside.



Multi-function pedal with chair movement
control and instrument control using lever,
with water and "chip-blower" selector.



Separate water and spray control valves
for each instrument. Microsensor speed
selector from 0 to 2,500 RPM (Selective)
and from 0 to 40,000 RPM (Global).



All the ANCAR devices include a wet towel
rechargeable dispenser "SOEX Wiper"
for hygiene purpose and disinfection of
surfaces and instruments.

UW105



THE UW SERIES GETS MORE DONE IN LESS TIME

With our redesigned UW hardmount washer-extractors, UniMac® gives you more ways to improve the efficiency of your laundry room. With 300 G-Force extraction, they deliver extremely fast dry times. Combined with advanced UniLinc™ controls and OPTispray™ Rinsing Technology, these machines increase your productivity better than any other machine on the market.

INCREASED CAPACITY

5-10 lb larger capacity than older UW models so you can wash more in every load.

DECREASED FOOTPRINT

Smaller footprint means these machines take up less space in your laundry room.

IMPROVED DOOR

Rugged hinge and handle paired with a proven roll pin/cam door lock system allows for smooth open-and-close operation.

ENLARGED DOOR OPENING

Larger door openings allow you to get loads in and out faster, improving your productivity compared to competitor brands.

NEW MODELS

UW85 and 105

UW130 and 160

OLD MODELS

UW80 and 100

UW125

COMPETITOR MODELS

COMPETITOR 80 and 100

COMPETITOR 140 and 160

DIAMETER

21"

24.8"

17.5"

20"

18"

20"



WORLD-CLASS SUPPORT

At UniMac, we're committed to our customers. We want to be sure that every product we manufacture continuously meets your needs and helps your business succeed. It's the reason why every machine comes with an industry-leading warranty for peace of mind, along with comprehensive support from the largest, most knowledgeable and responsive distributor network in the industry.

WARRANTY

A five-year warranty covers the frame, basket, shaft, bearings and seals from failure or breakage during normal operation due to defects in material or workmanship. A limited three-year warranty is offered on all other parts.

SERVICE PARTS AVAILABILITY

FACTORY-TRAINED TECHNICIANS AND GLOBAL DISTRIBUTION NETWORK

SERVICE TRAINING CERTIFICATION FOR DISTRIBUTORS

INDUSTRY-LEADING, LAUNDRY-FOCUSED FINANCING

LAUNDRY DESIGN SERVICES



REDESIGNED UW HARDMOUNT WASHER-EXTRACTORS 85-160 LB — UNILINC™ AND M30 CONTROLS

SPECIFICATIONS	UW85		UW105		UW130		UW160
Capacity - lb (kg)	85 (38.5)		105 (47.6)		130 (60)		160 (72.6)
Cylinder Diameter - in (mm)	36 (914)		36 (914)		42 (1067)		42 (1067)
Cylinder Depth - in (mm)	22 (559)		27 (686)		24 1/2 (622)		30 (762)
Cylinder Volume - cu. ft. (liters)	13 (368)		15.9 (450)		19.6 (555)		24.1 (682)
Width - in (mm)	40 1/8 (1019)		40 1/8 (1019)		46 1/8 (1171)		46 1/8 (1171)
Depth - in (mm)	51 1/2 (1308)		56 1/2 (1435)		54 1/2 (1384)		60 (1524)
Height - in (mm)	67 19/32 (1717)		67 19/32 (1717)		72 5/8 (1844)		72 5/8 (1844)
Door Opening Size - in (mm)	21 (533)		21 (533)		24 13/16 (630)		24 13/16 (630)
Door Bottom to Floor - in (mm)	28 1/8 (713)		28 1/8 (713)		29 13/16 (758)		29 13/16 (758)
Motor Size - HP (kW)	7.5 (5.6)		7.5 (5.6)		10 (7.5)		10 (7.5)
Control Options	UniLinc™	M30	UniLinc™	M30	UniLinc™	M30	UniLinc™
Total # of Speeds	V Sp	M Sp	V Sp	M Sp	V Sp	M Sp	V Sp
	8	6	8	6	8	6	8
Cylinder Speed RPM (G-Force)	Gentle	28 (.40)	28 (.40)	28 (.40)	26 (.40)	26 (.40)	26 (.40)
	Wash	39 (.78)	39 (.78)	39 (.78)	36 (.77)	36 (.77)	36 (.77)
	Distribution	70 (2.5)	70 (2.5)	70 (2.5)	65 (2.5)	65 (2.5)	65 (2.5)
	Very Low Extract	230 (27)	230 (27)	230 (27)	213 (27)	213 (27)	213 (27)
	Low Extract	443 (100)	443 (100)	443 (100)	410 (100)	410 (100)	410 (100)
	Medium Extract	626 (200)	626 (200)	626 (200)	579 (200)	579 (200)	579 (200)
	High Extract	700 (250)	–	700 (250)	–	–	648 (250)
	Very High Extract	766 (300)	–	766 (300)	–	–	710 (300)
Drain Diameter - in (mm)	2 @ 3 (76)	1 @ 3 (76)	2 @ 3 (76)	1 @ 3 (76)	2 @ 3 (76)	1 @ 3 (76)	2 @ 3 (76)
Steam Connection - in (mm)	1/2 (13)		1/2 (13)		3/4 (19)		3/4 (19)
Water Inlet Connection - in (mm)	4 @ 3/4 (19)	2 @ 3/4 (19)	4 @ 3/4 (19)	2 @ 3/4 (19)	2 @ 1 (25) + 2 @ 3/4 (19)	2 @ 1 (25)	2 @ 1 (25) + 2 @ 3/4 (19)
Shipping Dimensions - in (mm)	Width	43 3/16 (1097)		43 3/16 (1097)		49 3/16 (1250)	
	Depth	61 13/16 (1570)		61 13/16 (1570)		64 13/16 (1646)	
	Height	69 3/8 (1763)		69 3/8 (1763)		76 3/8 (1941)	
Net Weight - lb (kg)	1670 (757)		1700 (771)		2040 (925)		2070 (939)
Standard Shipping Weight - lb (kg)	1720 (780)		1750 (794)		2100 (953)		2130 (966)
Slat Crate Shipping Weight - lb (kg)	1870 (848)		1900 (862)		2260 (1025)		2290 (1039)
Agency Approvals	cETLus, CE		cETLus, CE		cETLus, CE		cETLus, CE



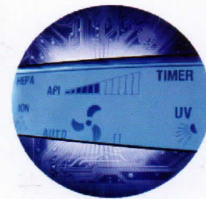
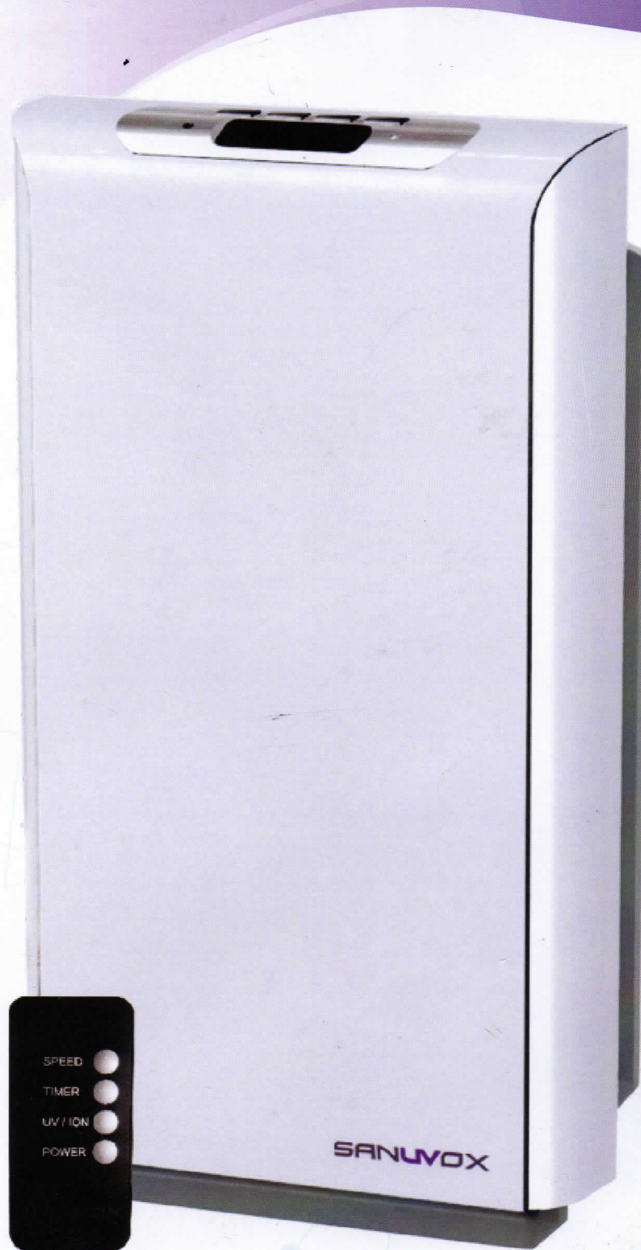
SERIOUS ABOUT LAUNDRY.

SINGLE TUMBLE DRYERS 25-35 LB & STACK TUMBLE DRYERS 30-45 LB

MODELS	UT25	UT30	UT35	UTT30	UTT45
Control Option	UniLinc™ Programmable Control Dual Digital Timers	UniLinc™ Programmable Control Dual Digital Timers	UniLinc™ Programmable Control Dual Digital Timers	Programmable Control Dual Digital Timers	Programmable Control Dual Digital Timers
Dry Weight Capacity – lb (kg)	25 (11.3)	30 (13.6)	35 (15.9)	2 x 30 (13.6)	2 x 45 (20.4)
Cylinder Size – in (mm) (diameter x depth)	26½ x 24 (673 x 610)	26½ x 30 (673 x 762)	30 x 30 (762 x 762)	30 x 26 (762 x 660)	33 x 30 (838 x 762)
Cylinder Volume – cu. ft. (liters)	7.7 (217)	9.6 (271)	12.3 (347)	10.6 (301)	14.8 (421)
Width – in (mm)	28 (711)	28 (711)	31½ (800)	31½ (800)	34½ (876)
Depth – in (mm)	40 7⁄8 (1038)	46 7⁄8 (1191)	46 7⁄8 (1191)	42 7⁄8 (1086)	48 5⁄8 (1235)
Height – in (mm)	63 7⁄8 (1622)*	63 7⁄8 (1622)*	63 7⁄8 (1622)*	76 ¼ (1937)	81 ¼ (2064)
Motor – HP (W)	¼ (187)	¼ (187)	¼ (187)	2 x ¼ (187)	2 x ½ (373)
Air Outlet Diameter – in (mm)	6 (152)	6 (152)	8 (203)	1 x 8 (203)	1 x 10 (254)
Airflow – cfm (liters/sec)	60 Hz: 500 (236) 50 Hz: 430 (203)	60 Hz: 500 (236) 50 Hz: 430 (203)	60 Hz: 650 (307) 50 Hz: 550 (260)	60 Hz: 2 x 400 (189) 50 Hz: 2 x 340 (160)	60 Hz: 2 x 600 (283) 50 Hz: 2 x 500 (236)
Reversing Cylinder	Option	Option	Option	Not available	Not available
Water Inlet Size (C.A.R.E. System)	(1) ¾"-11 ½" NH Hose Conn.	(1) ¾"-11 ½" NH Hose Conn.	(1) ¾"-11 ½" NH Hose Conn.	N/A	N/A
Plumbing Connection – in (mm)	Gas Models – ½" NPT (13) Steam Models – ¾" NPT (19)	Gas Models – ½" NPT (13) Steam Models – ¾" NPT (19)	Gas Models – ½" NPT (13) Steam Models – ¾" NPT (19)	Gas Models – ½" NPT (13) Steam Models – ¾" NPT (19)	Gas Models – ½" NPT (13) Steam Models – N/A
Energy Data	Gas Models – 64,000 Btu/hr (18.8 kW) Steam Models – At 100 psi (6.9 bar): 3.9 BHP, 134,700 Btu/hr (39.6 kW) Electric Models – 12 kW	Gas Models – 73,000 Btu/hr (21.4 kW) Steam Models – At 100 psi (6.9 bar): 3.9 BHP, 134,700 Btu/hr (39.6 kW) Electric Models – 21 kW	Gas Models – 90,000 Btu/hr (26.4 kW) Steam Models – At 100 psi (6.9 bar): 4.8 BHP, 166,000 Btu/hr (48.6 kW) Electric Models – 24 kW	Gas Models per Pocket – 73,000 Btu/hr (21.4 kW) Steam Models per Pocket – At 100 psi (6.9 bar): 3.2 BHP, 111,000 Btu/hr (32.5 kW) Electric Models per Pocket – 21 kW	Gas Models per Pocket – 95,000 Btu/hr (27.8 kW) Steam Models per Pocket – N/A Electric Models per Pocket – N/A
Net Weight – lb (kg)	300 (137)	330 (150)	360 (163)	544 (247)	673 (305)
Shipping Weight – lb (kg)	332 (151)	364 (165)	394 (179)	582 (264)	718 (326)
Agency Approvals**	CSA, CE	CSA, CE	CSA, CE	CSA, CE	CSA, CE

BIO PÜR by SANUVOX

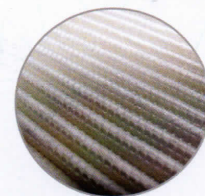
Air Treatment System



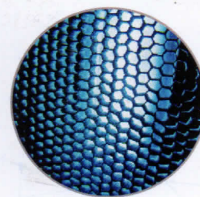
API Sensor continually tests air quality & automatically adjusts performance



Patented Sanuvox UV process for airborne sterilization and chemical / odor destruction



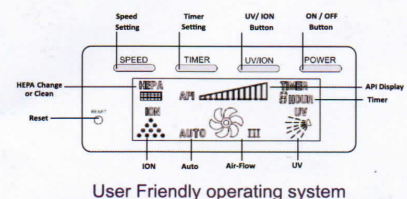
H12 class HEPA filter removes 99.5% of particulates from the air



TiO2 Catalyst works with the UV light to further destroy chemicals & odors

Specifications

- Plug Type: AC120V (Two Flat)
- Cord Length: 2.6m.
- Power Supply: AC120V/60Hz
- Three Speeds:
 - III=1250±100RPM
 - II=1000±100RPM
 - I=650±100RPM
- Rated Power: 50W
- CADR= 150 m³/h
- Air Flow= 165 m³/h (140 CFM)
- Product Size: 336 X 235 X595 mm
- Unit Weight: 6.7Kg

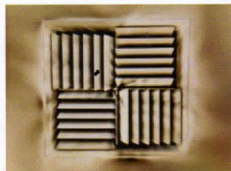


User Friendly operating system

For a Full Line of Residencial, Commercial & Medical

6-Stage Air Treatment System

Pre-Filter | HEPA | Carbon | TiO₂ | UV | Ionization



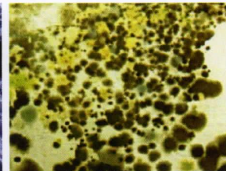
AIRBORNE PARTICULATES



BACTERIA



VIRUSES



MOLD



CHEMICALS



ALLERGENS



PET ODORS & DANDER



DUST MITE FECAL MATTER



LINGERING ODORS



LAVATORY ODORS

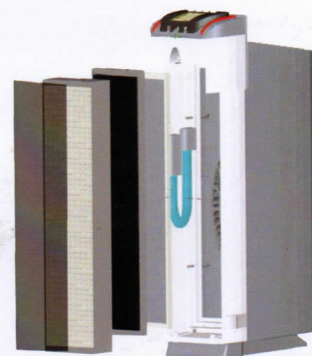


FOOD / COOKING ODORS



TOBACCO SMOKE

- ✓ API Sensor continually tests air quality and automatically adjusts system performance
- ✓ Cleanable H12 class high-efficiency HEPA filter removes 99.5% of particulates from the air
- ✓ Carbon filter for chemical and odor absorption
- ✓ Washable pre-filter
- ✓ Sanuvox patented UV process and high-efficiency UVV/UVC "J" Lamp destroys airborne viruses, bacteria, mold and germs, chemicals and odors
- ✓ TiO₂ Catalyst works with the UV light to further destroy chemicals & odors
- ✓ More than 2 million/cc negative ion output
- ✓ LCD display provides important user information including Air Pollution Index (API) that provides 'Real-Time' graphical representation of the airborne particulate count in the room
- ✓ Timer function with 1/2/4/6/8 hour option
- ✓ HEPA Clean / Replace Indicator on the LCD panel
- ✓ Four fan settings: Auto (controlled by particulate API Sensor), High, Medium & Low
- ✓ Includes Remote Control
- ✓ 150 CADR (Clean Air Delivery Rate)
- ✓ ETL Certified; 1 Year Warranty
- ✓ Capacity: 800 square feet



SANUVOX

146 rue Barr, St-laurent
Quebec, Canada H4T 1Y4

MODULE PACKAGES - SIMRS

dartech BASIC

- ✓ PENDAFTARAN
- ✓ KASIR
- ✓ BILLING RWI
- ✓ IGD
- ✗ POLIKLINIK
- ✓ REKAM MEDIS

- ✓ LAB
- ✓ FARMASI
- ✗ RADIOLOGI
- ✗ FISIOTERAPI

- ✗ OK/KAMAR OPERASI
- ✗ VK/KAMAR BERSALIN

- ✗ MCU
- ✓ GL
- ✗ AR, AP, KB
- ✗ FIXED ASSET
- ✗ LOGISTIK FARMASI
- ✗ LOGISTIK UMUM
- ✗ LOGISTIK DAPUR

- ✓ USER MANAGEMENT

- ✗ MARKETING
- ✗ BRIDGING
- (BPJS, INACBG, KEMENKES)

9 MODULES

dartech PRO

- ✓ PENDAFTARAN
- ✓ KASIR
- ✓ BILLING RWI
- ✓ IGD
- ✓ POLIKLINIK
- ✓ REKAM MEDIS

- ✓ LAB
- ✓ FARMASI
- ✓ RADIOLOGI
- ✓ FISIOTERAPI

- ✓ OK/KAMAR OPERASI
- ✓ VK/KAMAR BERSALIN

- ✗ MCU
- ✓ GL
- ✗ AR, AP, KB
- ✗ FIXED ASSET
- ✓ LOGISTIK FARMASI
- ✗ LOGISTIK UMUM
- ✗ LOGISTIK DAPUR

- ✓ USER MANAGEMENT

- ✗ MARKETING
- ✓ BRIDGING
- (BPJS, INACBG, KEMENKES)

16 MODULES

dartech ENTERPRISE

- ✓ PENDAFTARAN
- ✓ KASIR
- ✓ BILLING RWI
- ✓ IGD
- ✓ POLIKLINIK
- ✓ REKAM MEDIS

- ✓ LAB
- ✓ FARMASI
- ✓ RADIOLOGI
- ✓ FISIOTERAPI

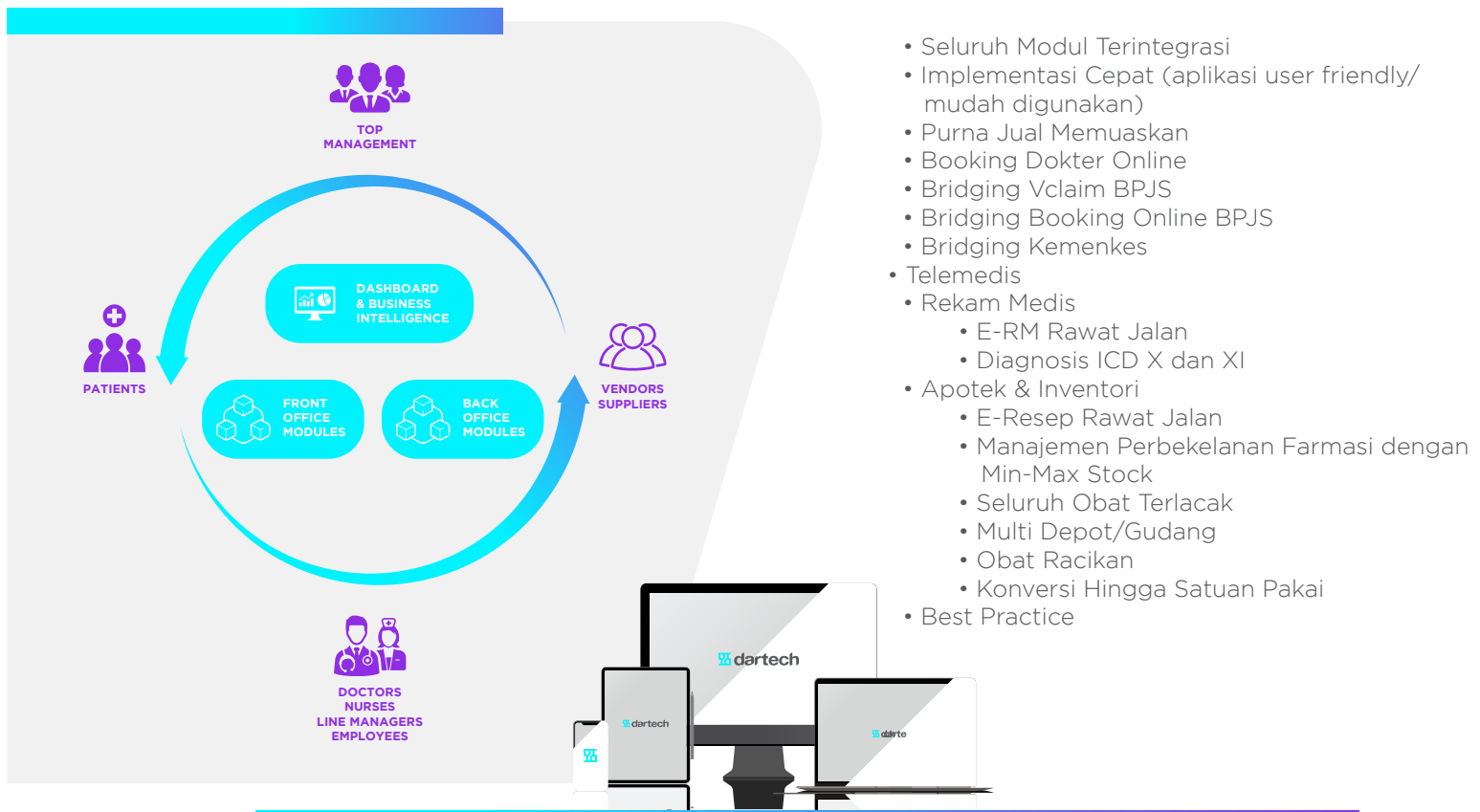
- ✓ OK/KAMAR OPERASI
- ✓ VK/KAMAR BERSALIN

- ✓ MCU
- ✓ GL
- ✓ AR, AP, KB
- ✓ FIXED ASSET
- ✓ LOGISTIK FARMASI
- ✓ LOGISTIK UMUM
- ✓ LOGISTIK DAPUR

- ✓ USER MANAGEMENT

- ✓ MARKETING
- ✓ BRIDGING
- (BPJS, INACBG, KEMENKES)

22 MODULES



dartech adalah perusahaan perangkat lunak yang menyediakan **Sistem Informasi Manajemen Rumah Sakit**. Layanan yang kami berikan dapat disesuaikan dengan kebutuhan Anda.

DK 310/310

LED Operating Lamp



Double Ceiling Operating Lamp

Maximum Illumination	60.000 lux
Color Temperatur	4000/ 4500/ 5000K
Color Rendering Index	Ra ≥ 90% ± 5
Bulb Number	14 pcs (OSRAM)
Bulb Service Life-span	50.000 Hour
Bulb Power/ Voltage	42 W/ 24 V
Back-up Battery	4 – 6 Hours

DK 5700

LED Operating Lamp



Spesification

Parameter	Hollow CreLed 5500	Hollow CreLed 5700
Lamp head diameter (mm)	500	700
Quantity of LED bulbs (pcs)	21	30
Bulb features	Imported OSRAM LED bulbs	
Illumination (Lux)	60,000--120,000	80,000--160,000
Color temperature (K)	4000±500	4000±500
Spot diameter (mm)	150-350	150-350
4 Operation modes	background, surface, deep cavity, normal	
Bulb service life(hours) / Power	≥50,000 / 3 watt	≥50,000 / 3 watt
Camera system	optional	optional
Lowest height of installation (m)	2.8	2.8

Denki E30

Touchscreen 3 Chanel ECG



User Guide



Digital Keyboard



Spesification

- 7" Touchscreen Display Monitor
- A/D Resolution A/D: 12 bits
- Digital Keyboard
- Digital User Guide
- 4 Hour Battery (full Charge)

- Heart rate range 30 ~ 300 BPM
- Simultaneously 12 leads
- Size 301 x 235 x 96 (mm)
- Small, Light and Easy to move
- Paper Print Width 80 mm
- Transfer data to USB

DK E1

Operating Table



TM 18 Treadmill

Stress Test ECG



DM Software (DMS) is a recognized leader in the research, development, and manufacture of electrocardiography (ECG) products and analysis software.

- Use frequency modulated AC motor.
- Auto belt straight-keeping technique, no manual adjustment is needed.
- Gradually gain speed from standstill status, emergency stop button installed. Speed and grade change automatically in accord with computer protocol.
- Durable, lesser maintenance required.
- Can be able to communicate with computer through USB port if USB-COM adapter is used.



OUR PARTNER



OUR PRODUCT



UDARA BERSIH SEPERTI UDARA DI PEGUNUNGAN



+6221 2252 1797
+6221 2252 1798
+6221 2252 1799
www.mmr.co.id

HEAD OFFICE :
CBD Citypark Blok E1 No 8
Cengkareng Timur
Jakarta Barat 11730 - Indonesia

SALES / MARKETING OFFICE :
Rukan Puri Mansion Blok B No. 6
Jl. Lingkar Luar Barat, Puri Kembangan
Kembangan Selatan, Jakarta Barat 11610