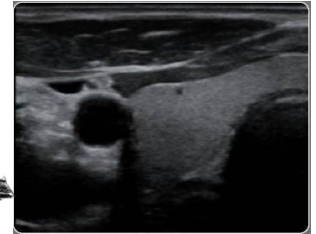


DC - 30

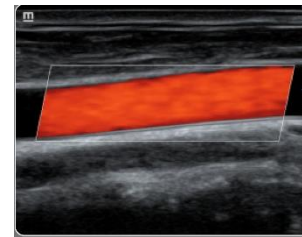
Diagnostic Ultrasound System
Capable | Versalite | Smart



Liver with iClear



Thyroid with FR iBeam



Common Carotid Artery



Kidney Perfusion

System Highlights

- B/M/Color/Power/Directional Power Doppler Flow Imaging
- Pulse Wave Doppler (High Pulsed Repetition Frequency)
- PSH™ (Phase Shift Harmonic Imaging)
- iBeam™ (Spatial Compounding Imaging)
- iClear™ (Speckle Suppression Imaging)
- iTouch™ (Auto Image Optimization)
- iZoom™ (Full Screen View)
- Raw Data

Smart Application

- Obgyn
- Cardiac
- Vascular
- Radiology
- Internist
- Anaesthsia

Advance Function with reach

- iScape™ View (Realtime Panoramic Imaging)
- Auto IMT Package (Automatic measurement for Intima-media Thicknes)
- Natural Touch Elastography
- Smart 3D™ (Freehand 3D)
- iPage™ (Multi-Slice Imaging)

W